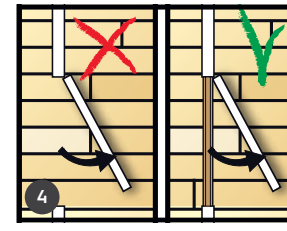
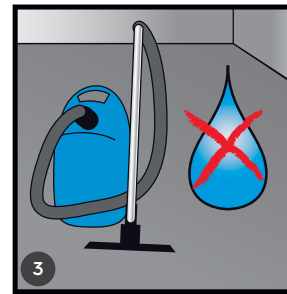
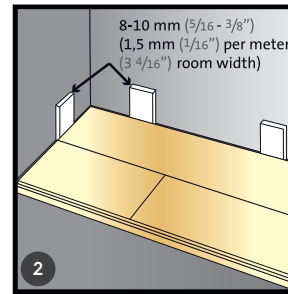
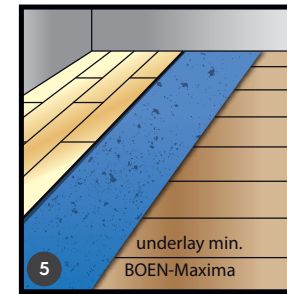


30-65% RH
+18° - +28° C
(+64,4° - +82,4° F)
+/-3 mm (1/8")
2 m (6 3/4")
Max: 0.1m= +/- 0.5mm (1/64")
0.6m= +/- 1.0mm (3/64")
1.0m= +/- 1.5mm (1/16")
1.5m= +/- 2.0mm (5/64")

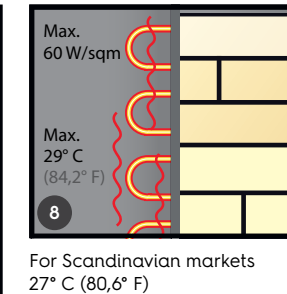
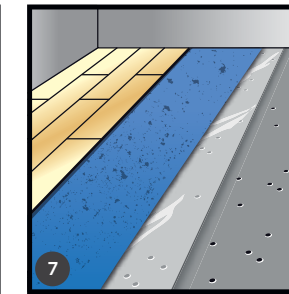


Maximális helyiségméret úsztatott fektetés estén megszakítás nélkül: 12 x 12m

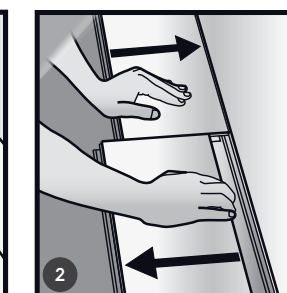
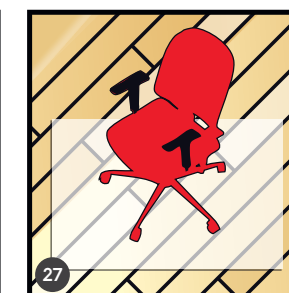
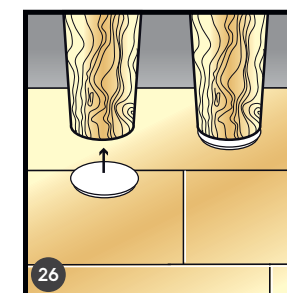
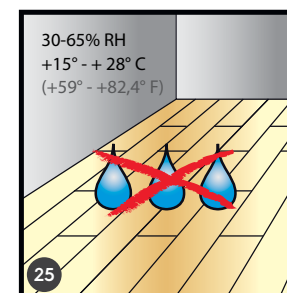
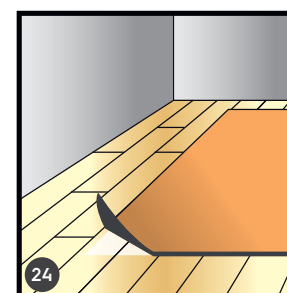
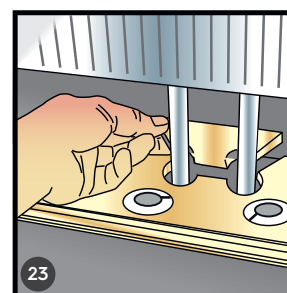
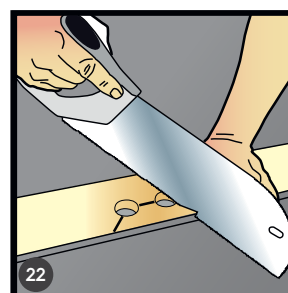
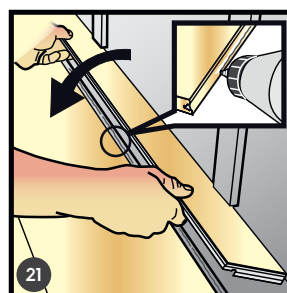
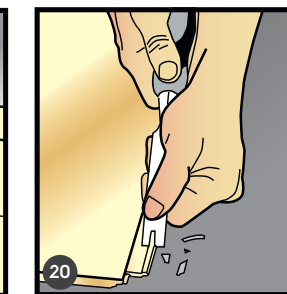
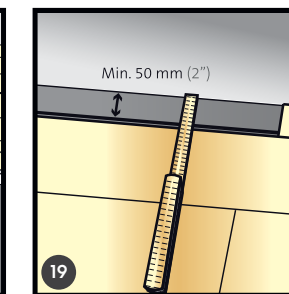
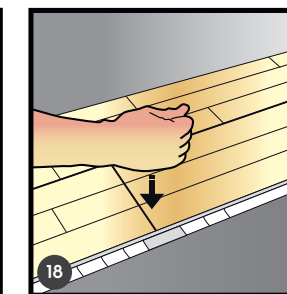
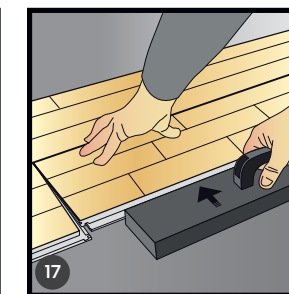
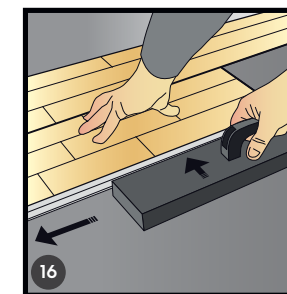
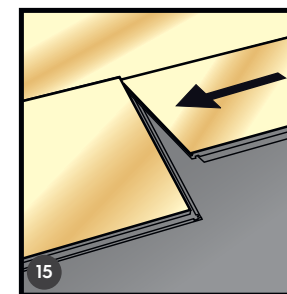
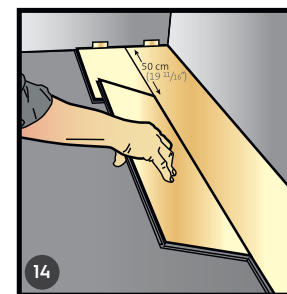
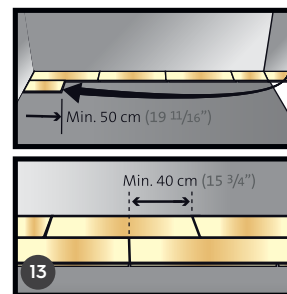
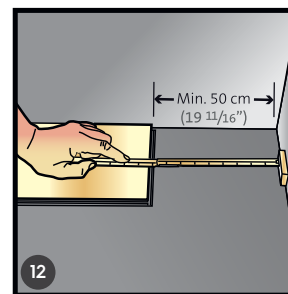
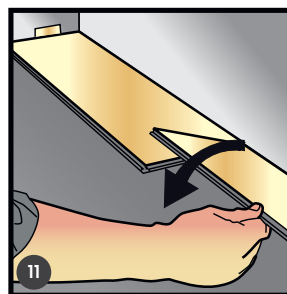
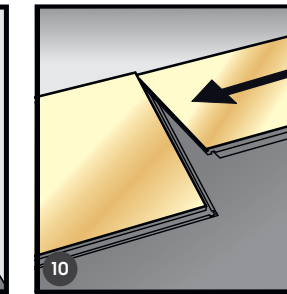
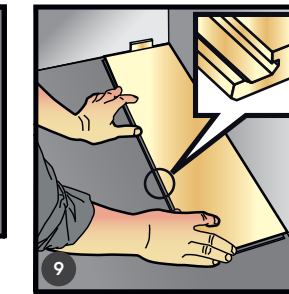


Property	KPI
Dynamic load, EN13793	DL25
Static load, EN826	CS
40 kPa	
Sustained static load, EN1606	
CC 5kPa	

For floating installation we recommend min. BOEN-Maxima.



For Scandinavian markets 27° C (80,6° F)



HU Minőségellenőreink kiválogatták és osztályozták a parkettát. Amennyiben bármilyen kétség merül fel a besorolással és/vagy a vizuális hibákkal kapcsolatban, fontos, hogy a parketta lerakása előtt jellezzék a forgalmazónak. A BOEN és a BOEN termékekkel kapcsolatos további információkért kérjük, látogasson el a következő weboldalra: www.boen.com



BOEN

Lerakási útmutató 5G

Lerakási útmutató

HU A parkettát mindig száraz helyen tárolja, és csak közvetlenül használat előtt nyissa ki a kartondobozokat.



boen.com



06

Boen AS

Topdalsveien 406-408, 4658 Tvet, Norway

Parquet flooring according to EN 15489-2017-12 and EN 14342:2013
9,5-23 mm total thickness
parquet for indoor use

DOP 4658, NB 0766

Dfl-s; E1, density >= 500kg/m³
thermal conductivity >= 0.14 W/mK